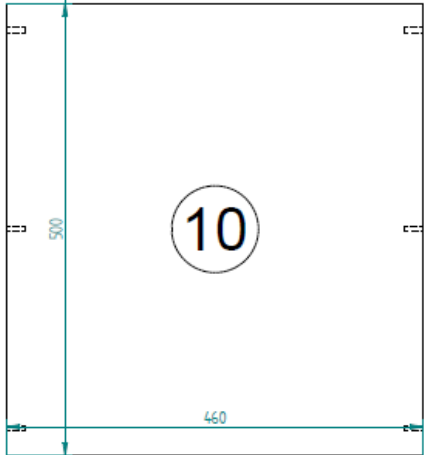
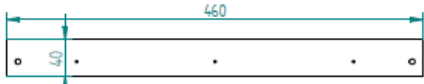
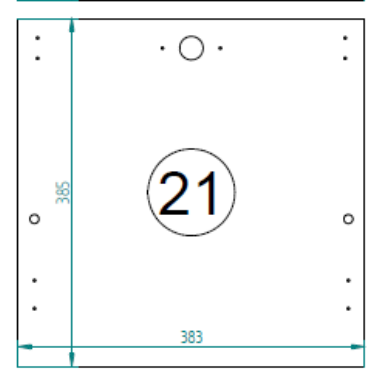
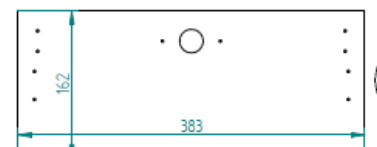
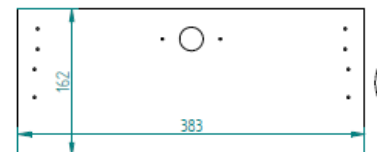
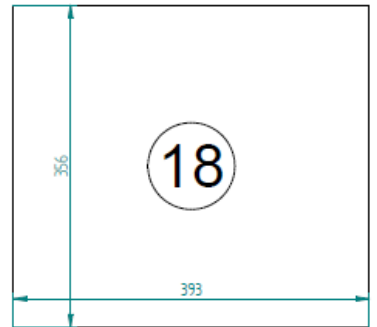
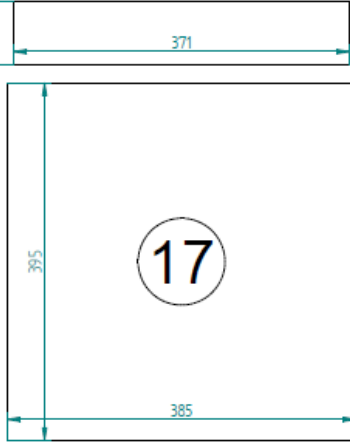
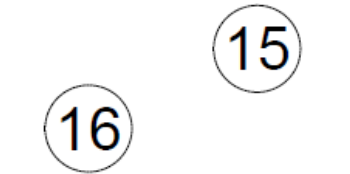
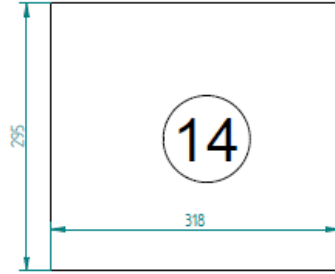
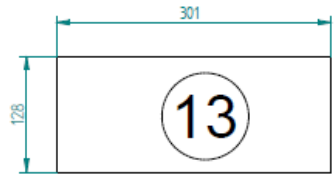
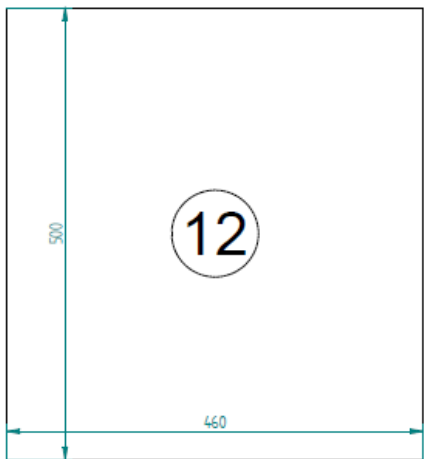
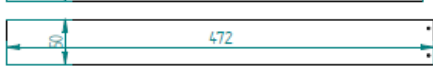


9



11



13

14

15

16

17

18

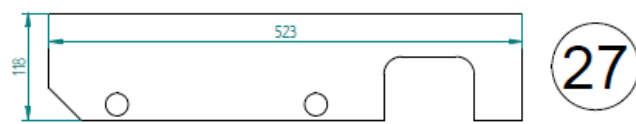
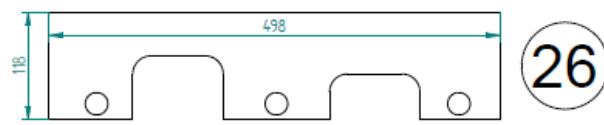
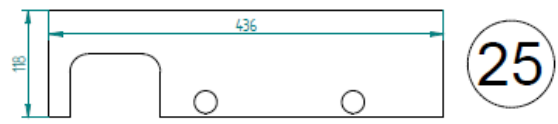
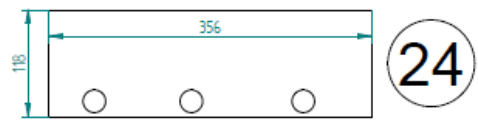
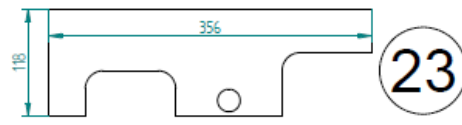
19

20

20

21

22



23

24

25

26

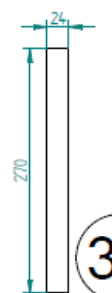
27



28



29

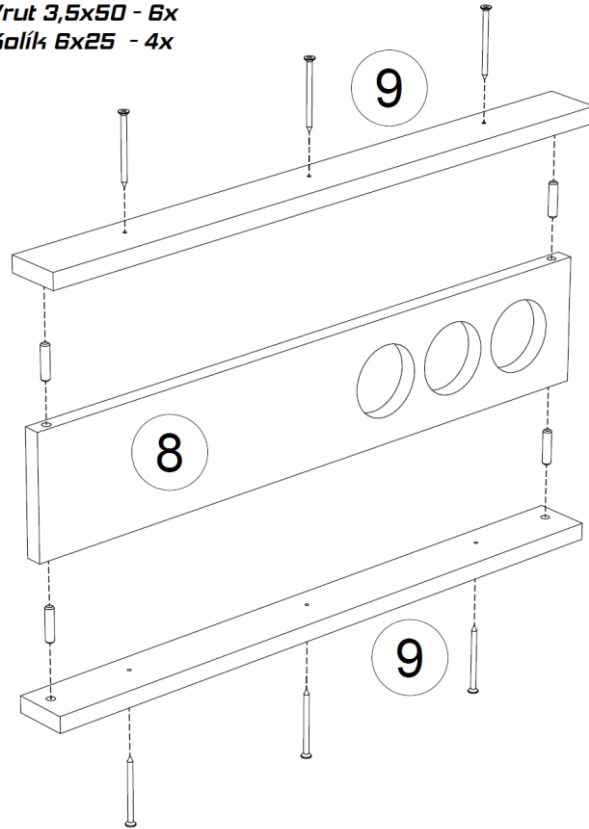


30

1.



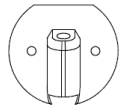
Vrut 3,5x50 - 6x
Kolík 6x25 - 4x



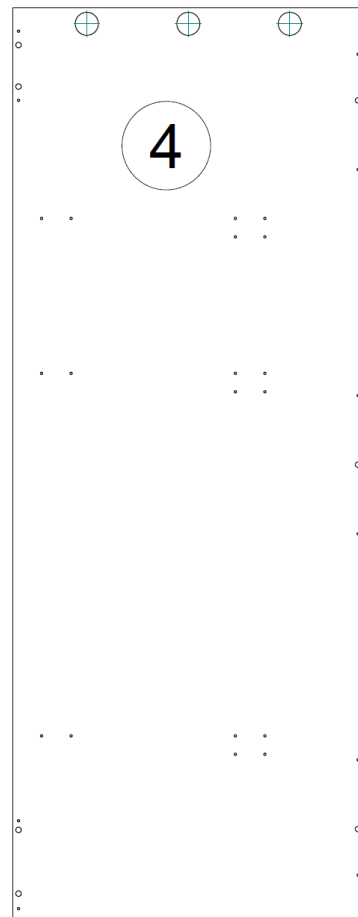
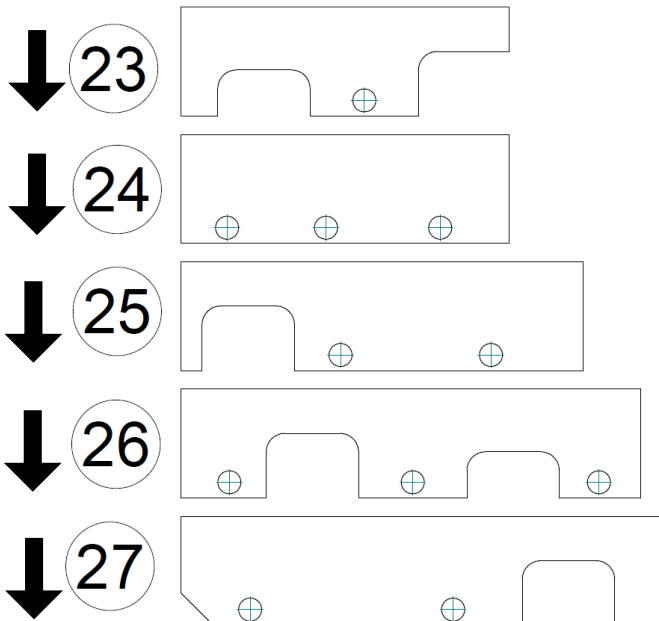
2. Namáčkněte/naklepněte korpusové spojky do připravených otvorů.



Korpusová spojka - 14x



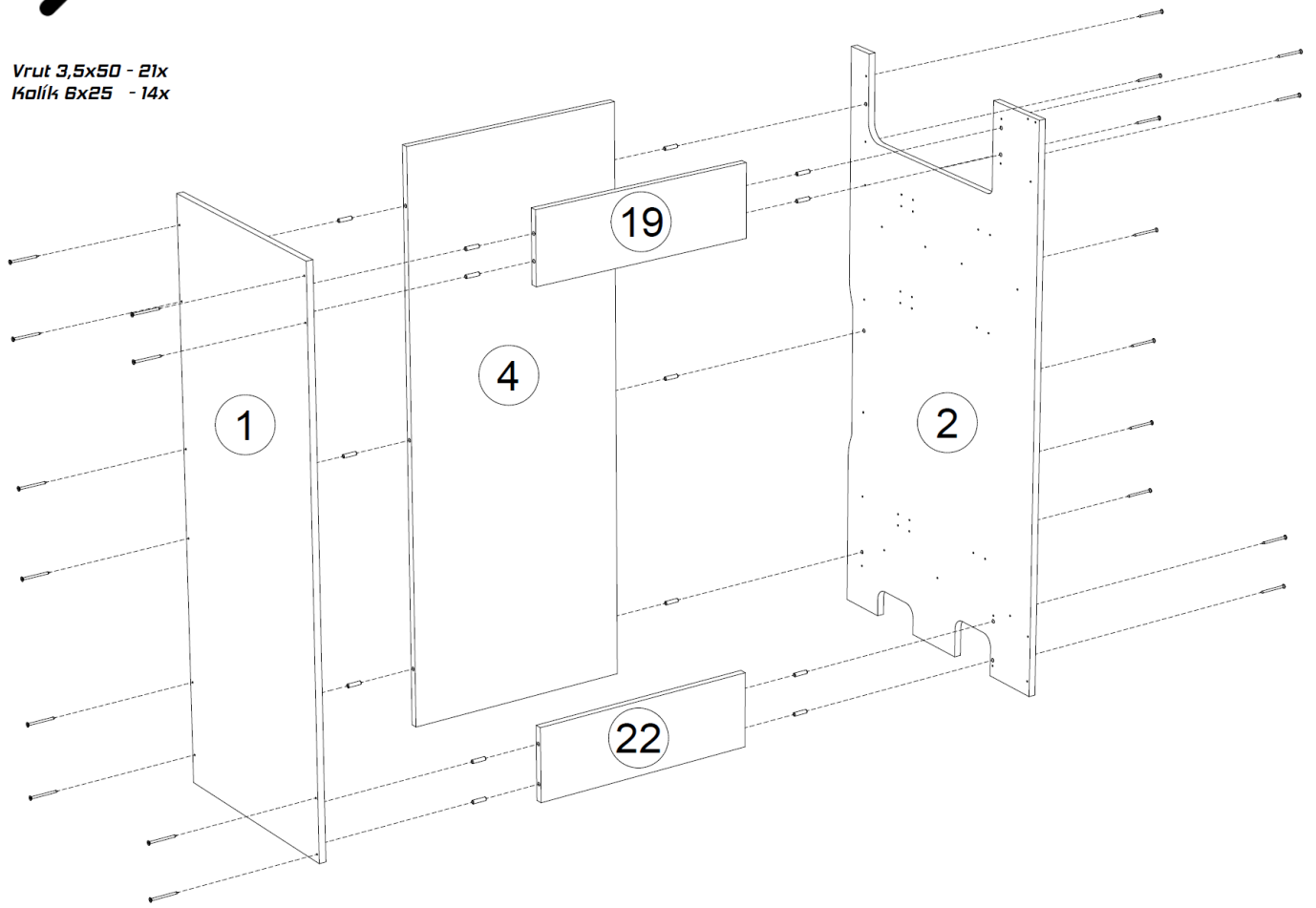
Znázornění orientace spojky



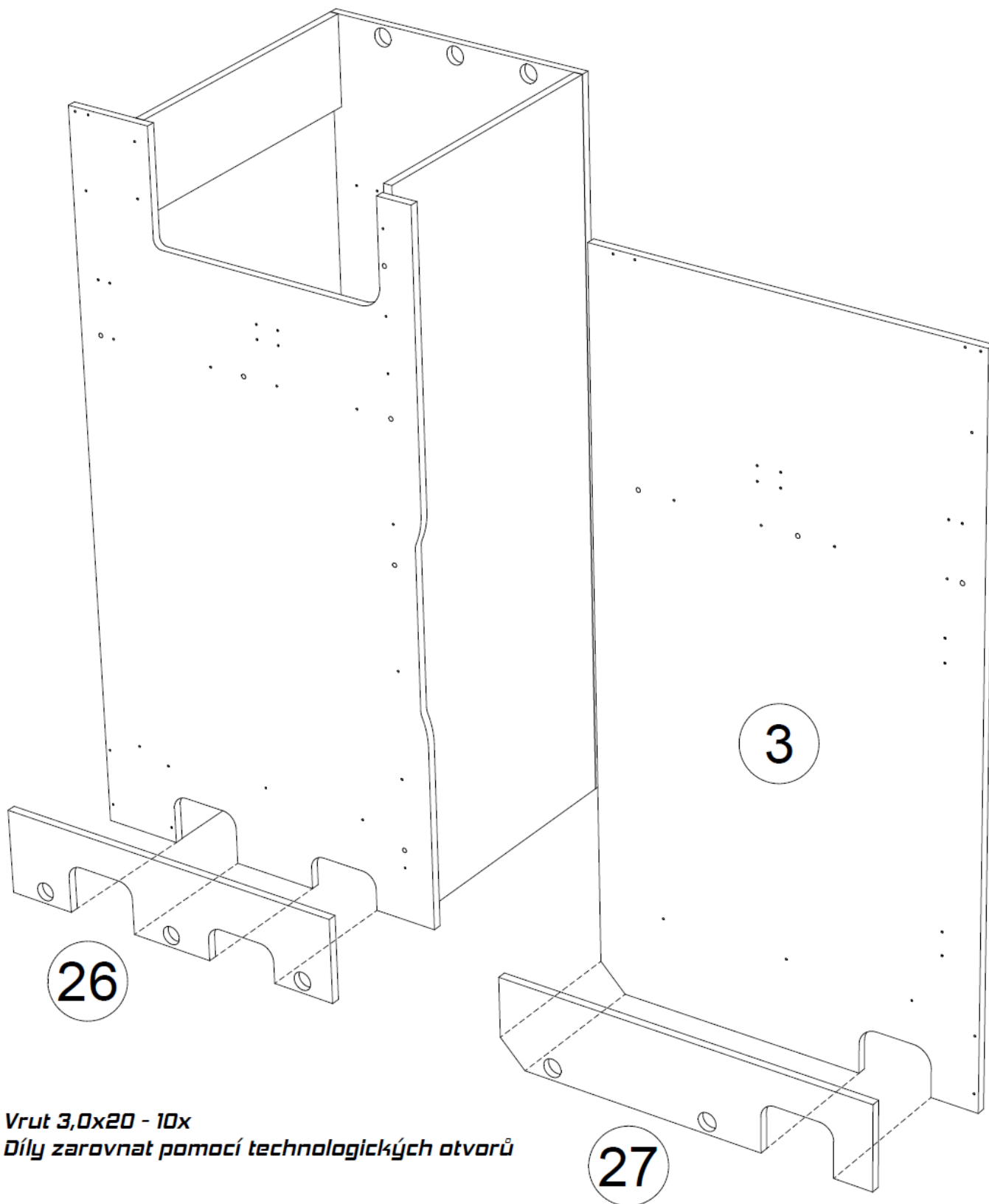
3.



Vrut 3,5x50 - 21x
Kolík 6x25 - 14x



4.



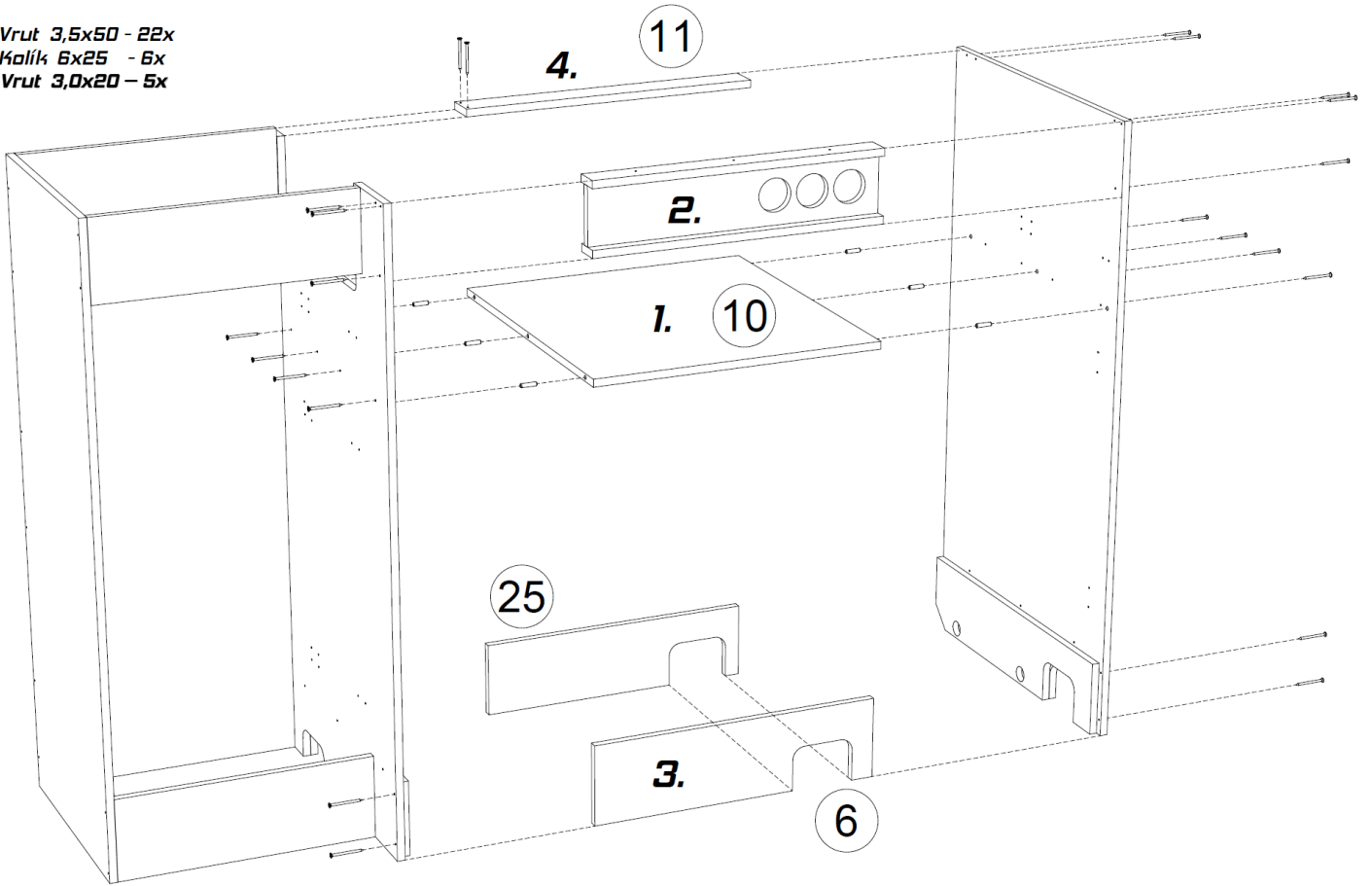
Vrut 3,0x20 - 10x

Díly zarovnat pomocí technologických otvorů

5.

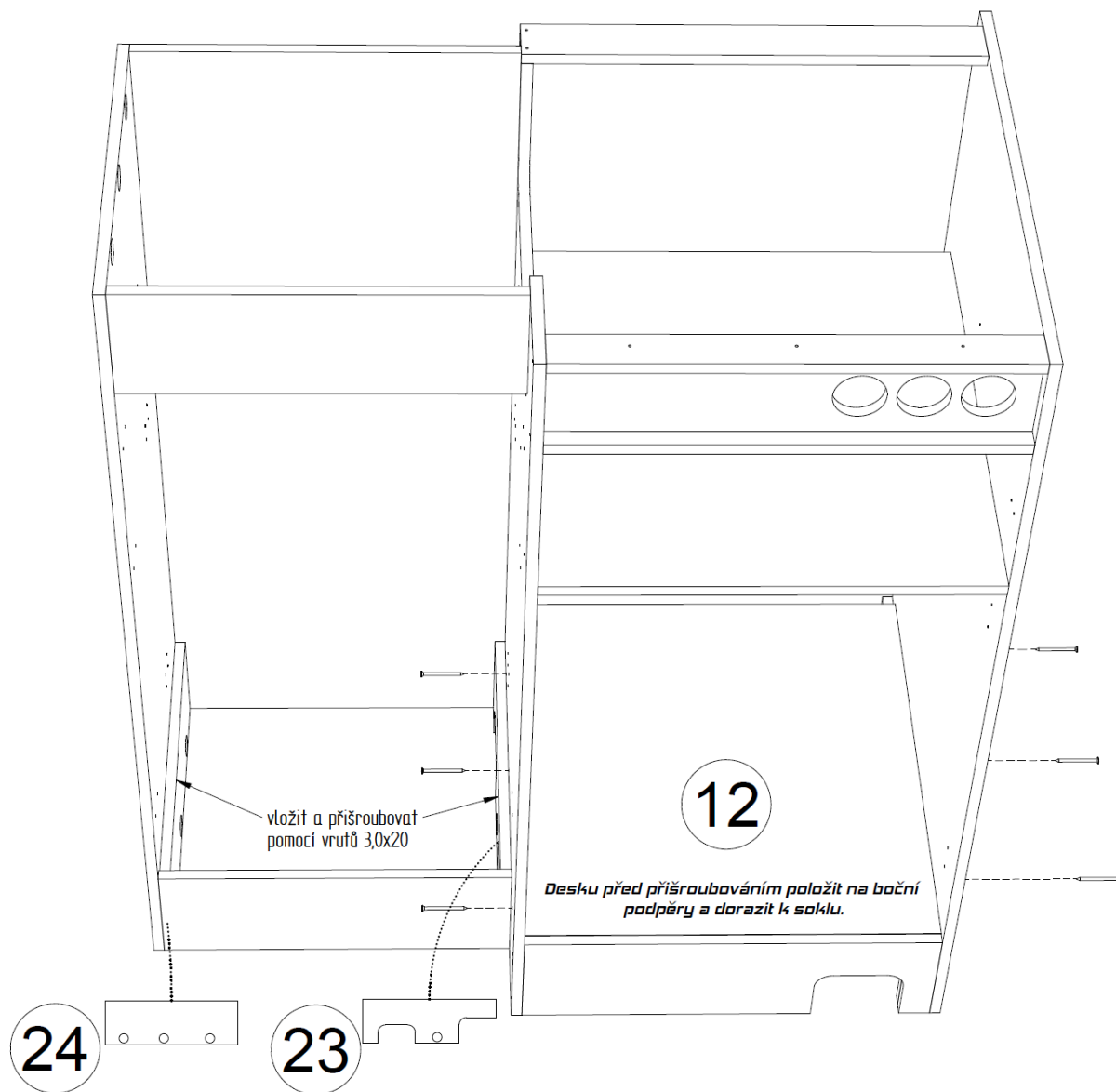


Vrut 3,5x50 - 22x
Kalik 6x25 - 6x
Vrut 3,0x20 - 5x

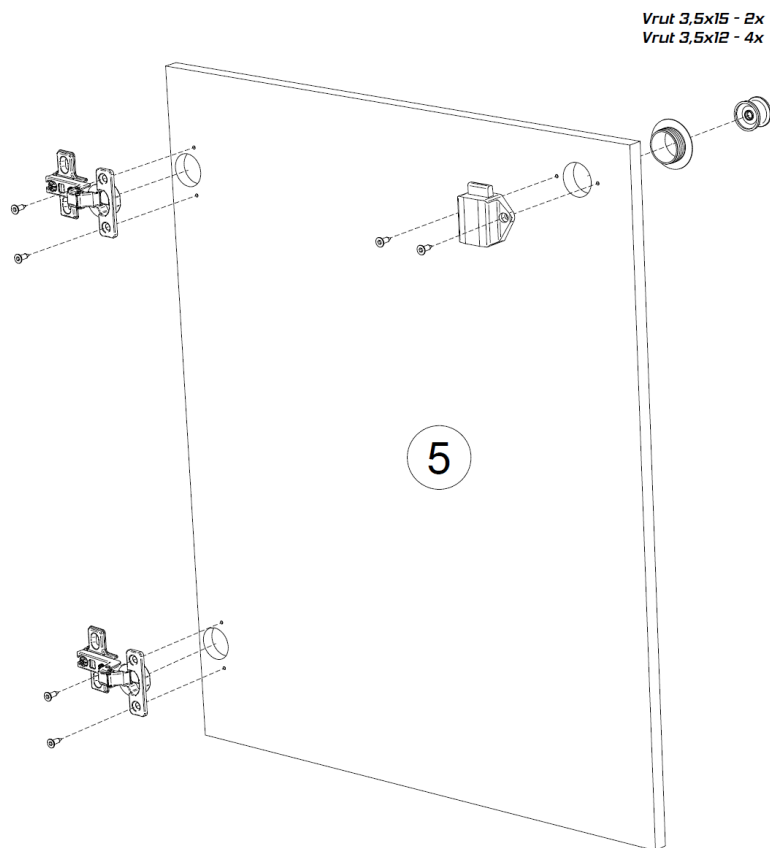


6.

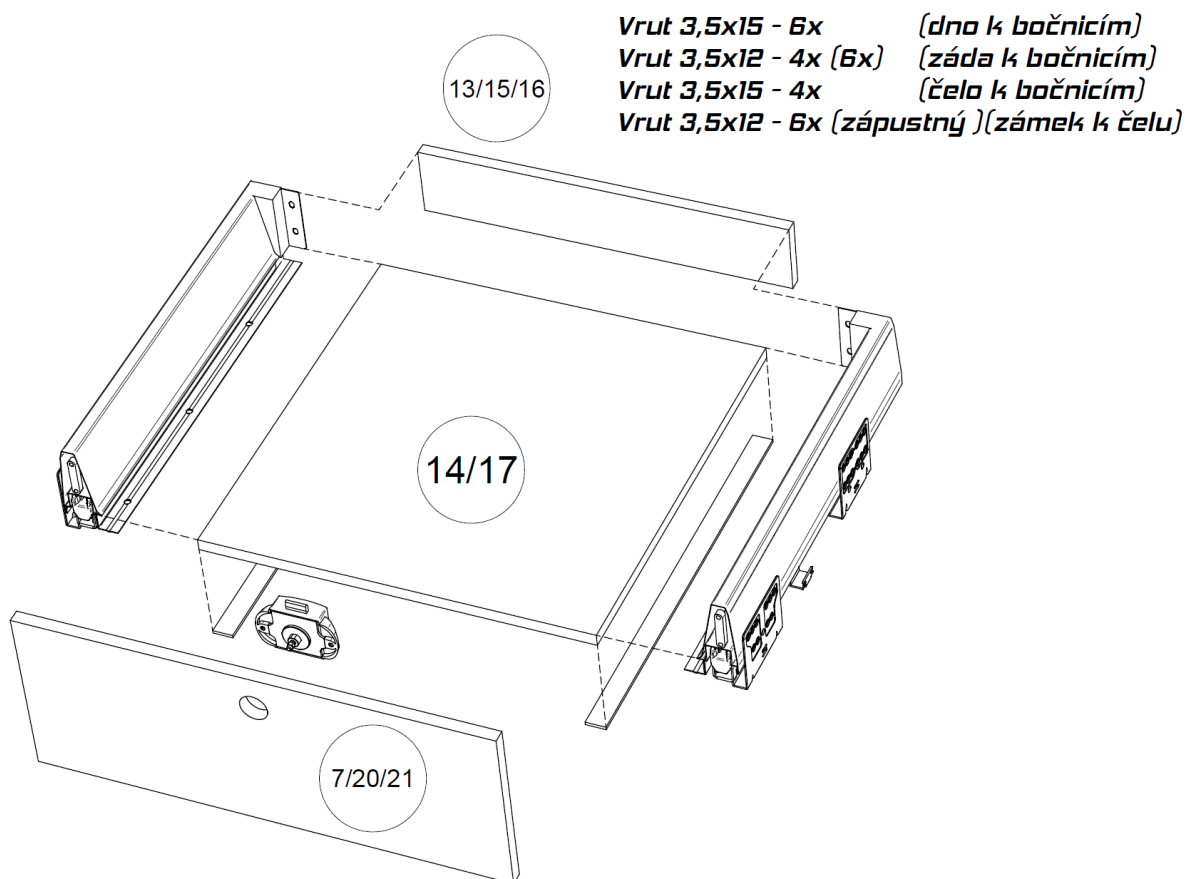
Vrut 3,5x50 - 6x
Vrut 3,0x20 - 10x



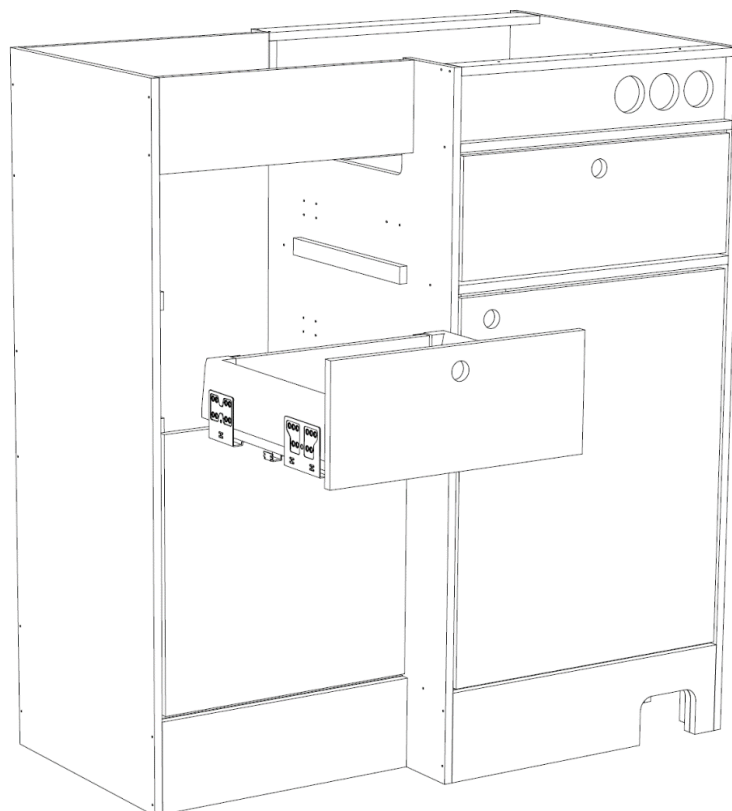
7.



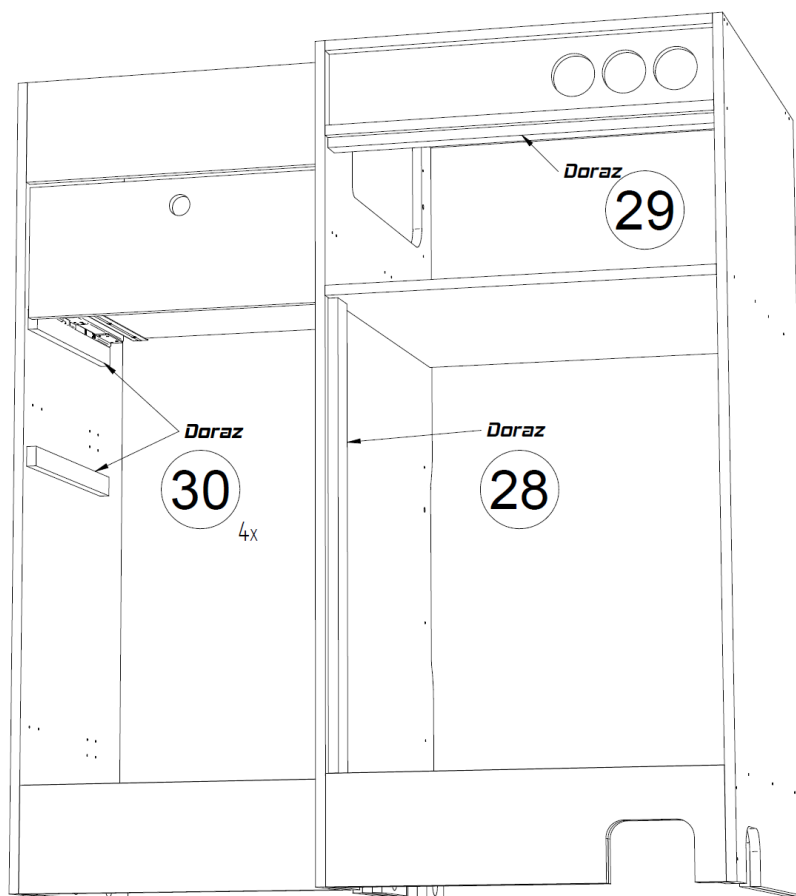
8. Při sestavení postupovat dle návodu u výsuvů.



9. *Bočnice výsuvů přišroubovat do označených děr pomocí vrtů se zápusťnou hlavou 3,5x12.*



10. *Pomocí vrtů se zápusťnou hlavou 3,0x20 přišroubujte díly sloužící jako dorazy tak, aby se zásuvky i dvířka o tyto prvky v zavřeném stavu opíraly a tvořily tak jednu linii.*



11. **Desku zarovnejte podle vyznačených rohů a tak, aby byly převisy rovnoměrně rozděleny a poté přišroubujte pomocí vrtů 3,5x20 přes korpusové spojky a vyznačené díly.**

